

# SHB Home Design - Thomas Farms



## Features:

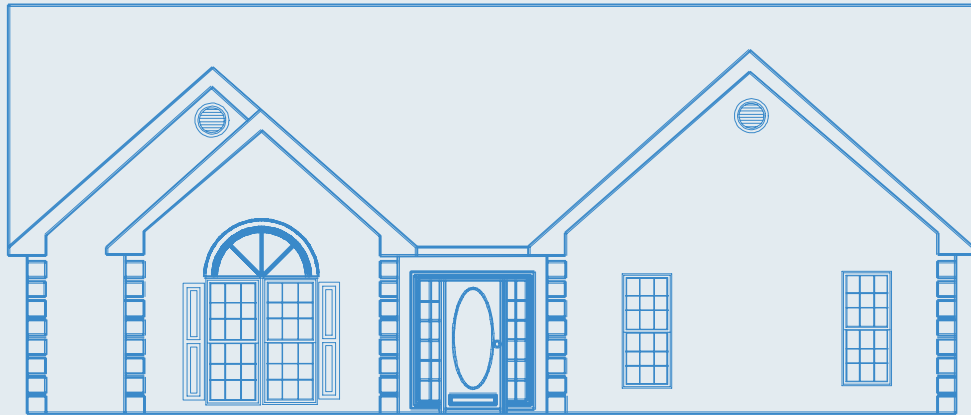
*Inviting, open floor plan*

*Well-designed kitchen overlooks breakfast area*

*Great room with fireplace*

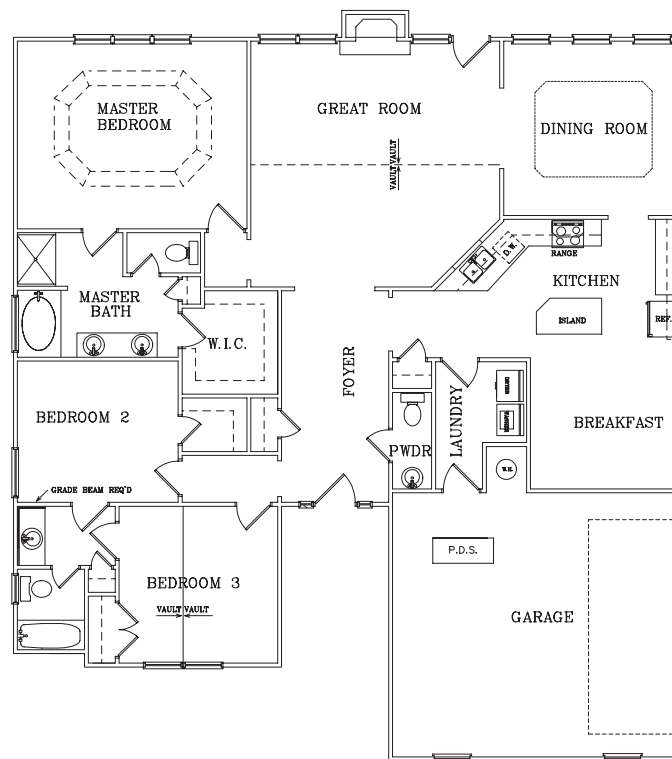
*Master bedroom has tray ceiling accent, complete master bath and large walk-in closet*

*Spacious laundry room*



## SCOTTSDALE

3 bedrooms • Master bath plus 1.5 full baths  
2 car garage



[www.starhomebuilders.com](http://www.starhomebuilders.com)

For additional information about this Star Home Builders home design please contact the real estate agent on duty.

