

# SHB Home Design - Audubon Trace



## Features:

Inviting, open floor plan

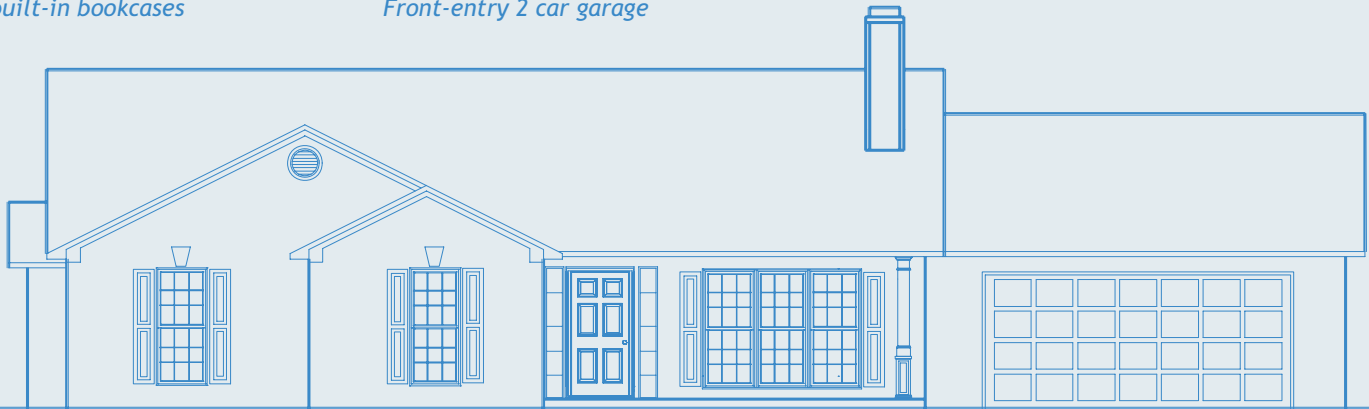
Well-designed kitchen with breakfast area

Great room with fireplace and built-in bookcases

Master bedroom has tray ceiling accent, complete master bath and large walk-in closet

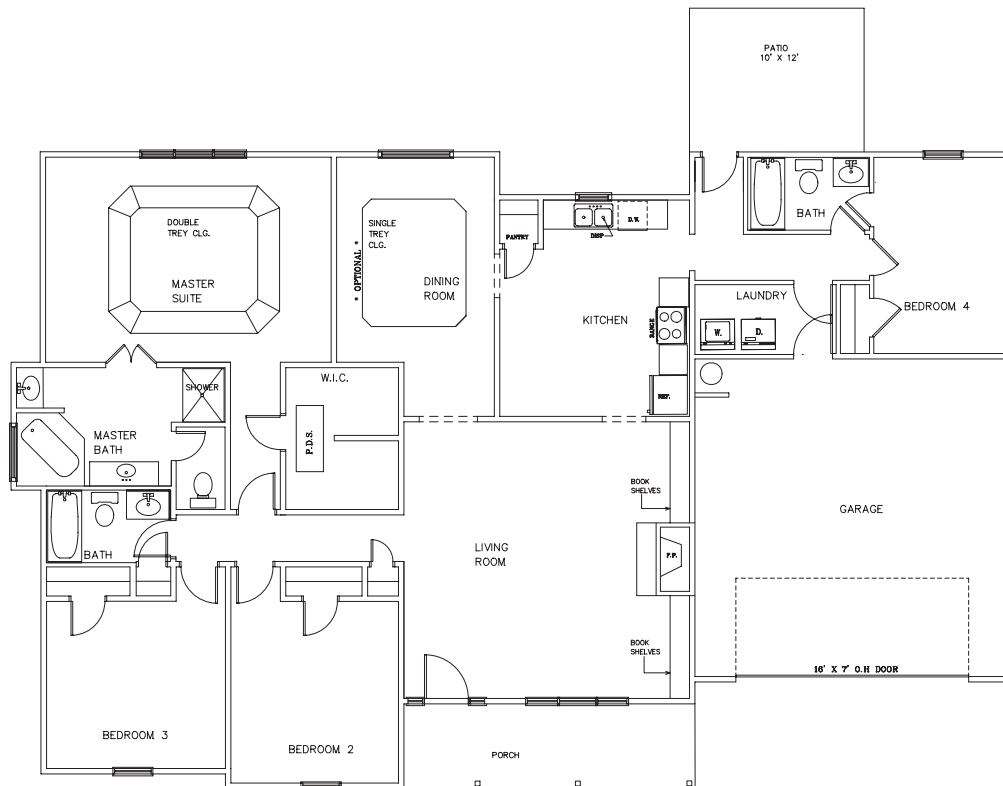
In-law suite with full bath

Front-entry 2 car garage



# SARAH

3 bedroom plus full in-law suite  
Master bath plus 2 full baths • 2 car garage



[www.starhomebuilders.com](http://www.starhomebuilders.com)

For additional information about this Star Home Builders home design please contact the real estate agent on duty.

